

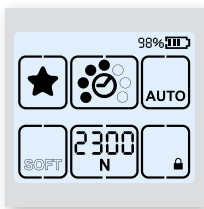
BXT3-13 / BXT3-16 / BXT3-19

TECHNICAL DATA SHEET

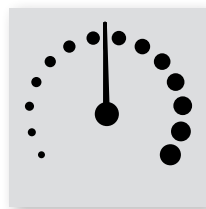
Hand Tool for Plastic Strapping



FEATURES



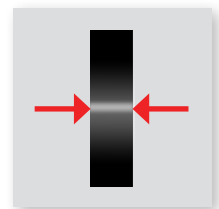
- **Full Touch User Interface** for easiest adjustment of parameters and tool status information for the operator.



- **Variable Tension Speed** controlled by finger pressure for sensitive packages.



- **Favourite Strapping Function** For quick one touch switch of tool settings for varying packages.



- **Strap Alignment Indicator** to ensure that strap is inserted correctly for higher process security.

TECHNICAL DATA



Strapping Tool		BXT3-13	BXT3-16	BXT3-19
Operation Mode		Auto / Semi / Manual	Auto / Semi / Manual	Auto / Semi / Manual
Tension Range	Standard	400 - 1,200N	900 - 2,500N	1,300 - 4,500N
	Soft	150 - 750N	400 - 1,360N	400 - 1,600N
Variable Tension Speed		0 - 290mm/s	0 - 220mm/s	0 - 120 mm/s
Tool Weight (Incl. Battery)		3.6kg	3.8kg	4.3kg
Dimensions (L x W x H)		370 x 141 x 135mm	370 x 141 x 135mm	370 x 143 x 135mm
Working Temperature		-10°C to +40°C	-10°C to +40°C	-10°C to +40°C
Relative Humidity		Up to 90%	Up to 90%	Up to 90%
Battery / Charger				
Charger Type		Bosch	Bosch	Bosch
Battery Charger Voltage		100 or 110 or 230V	100 or 110 or 230V	100 or 110 or 230V
Charging Time		15 - 30minutes	15 - 30minutes	15 - 30minutes
Battery Type		Bosch Li-Ion 18V, 2.0Ah	Bosch Li-Ion 18V, 2.0Ah	Bosch Li-Ion 18V, 4.0Ah
Cycles per Charge	Low Tension	800	800	800
	Medium Tension	600	400	500
	High Tension	400	200	300
Strap				
Material		Polyester (PET) or Polypropylene (PP)	Polyester (PET) or Polypropylene (PP)	Polyester (PET) or Polypropylene (PP)
Width		9-10mm, 12-13mm	12-13mm, 15-16mm	15-16mm, 18-19mm
Thickness		PET 0.4 - 0.8mm PP 0.5 - 0.8mm	0.5 - 1.0mm	0.8 - 1.3mm
Features				
0 - Tension Welding		•	•	•
Favourite Strapping Function		•	•	•
Strap Alignment Indication		•	•	•
Strap Dust Blow Out Vent		•	•	•
Battery Protection		•	•	•
Real Time Indication of Applied Tension		•	•	•
Display Colour Indication for Tool Status Information		•	•	•

ACCESSORIES



User Interface Cover
For additional protection in the harshest environments.



Protection Plate
Provides added protection on abrasive surfaces.



Suspension Bow
For stationary applications.



Bosch Charger
Additional chargers available, suitable for both battery types.



Bosch 18V 2Ah Battery
Additional batteries available for increased tool uptime.



Bosch 18V 4Ah Battery
Additional batteries available for increased tool uptime.